

GENERAL VEGETABLE PRODUCTION

Lecture 2:

Brief presentation of
vegetables



Solanaceae

- Tomato (*Solanum lycopersicum* L.)
- Pepper (*Capsicum annuum* L.)
- Eggplant (*Solanum melongena* L.)
- Potato (*Solanum tuberosum* L.)



Tomato





Field tomato crop





Pepper





Field pepper crop





Eggplant





Field eggplant crop





Potato





Cucurbitaceae

- Cucumber (*Cucumis sativus* L.).
- Melon (*Cucumis melo* L.).
- Watermelon (*Citrullus lanatus*).
- Zucchini squash (*Cucurbita pepo* L.).



Cucumber





Melon



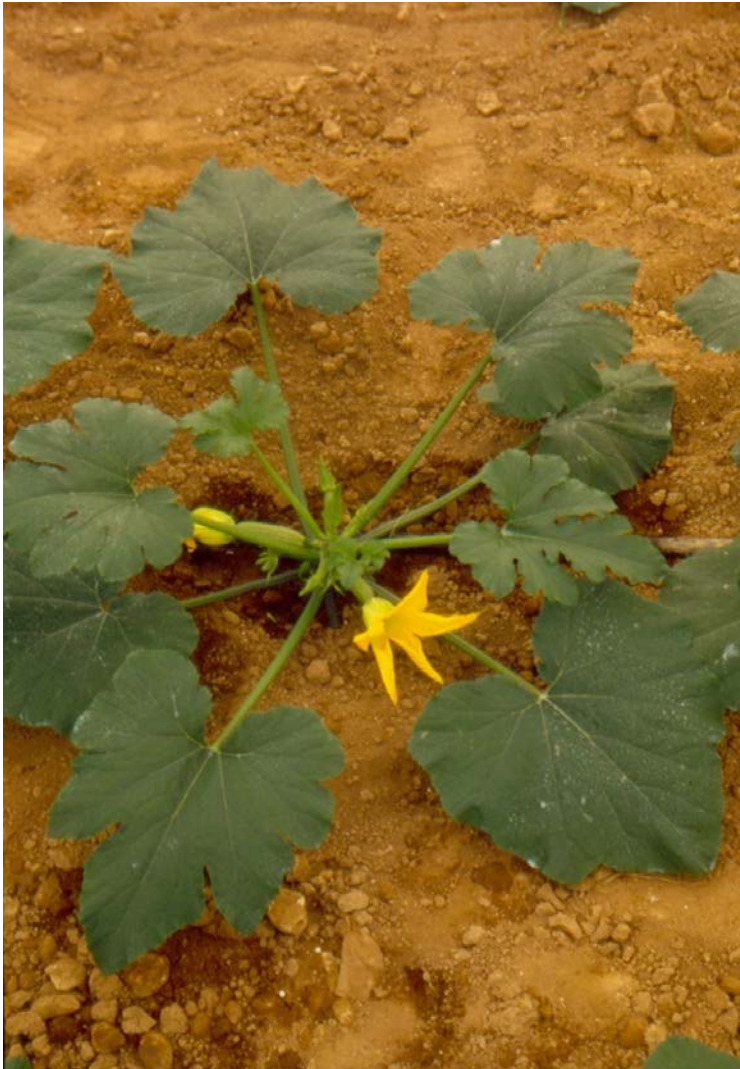


Watermelon





Zucchini Squash





Fabaceae

- French bean (*Phaseolus vulgaris L.*).
- Cowpea (*Vigna unguiculata*)
- Pea (*Pisum sativum*)



French bean





Cowpea





Pea





Compositae

- Lettuce (*Lactuca sativa* L.).
- Endivia (*Cichorium endivia* L.).
- Chicory (*Cichorium intybus* L.).
- Artichoke (*Cynara scolymus* L.).



Lettuce





Greenhouse lettuce crop





Endivie



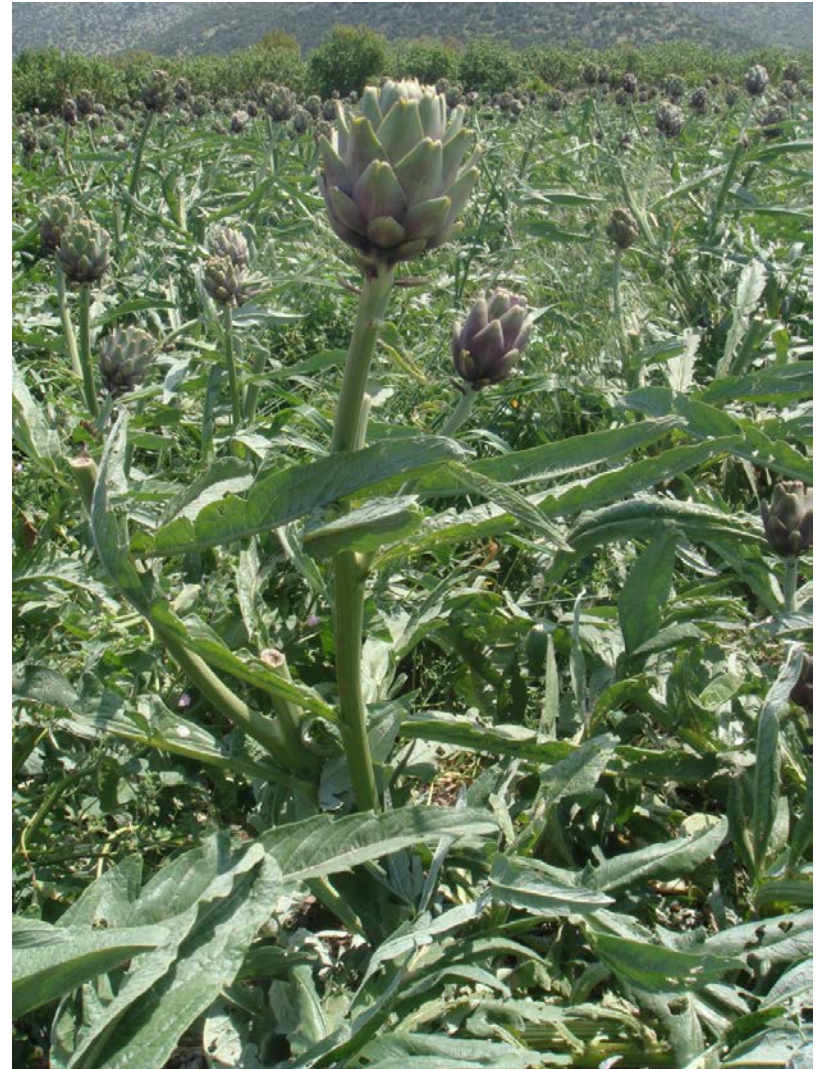


Chicory





Artichoke





Brassicaceae

- Cabbage (*Brassica oleracea*, var. *capitata*)
- Kohlrabi (*Brassica oleracea*, var. *gongylodes* L.)
- Cauliflower (*Brassica oleracea*, var. *botrytis*)
- Broccoli (*Brassica oleracea*, var. *italica*)
- Brussels sprouts (*B. oleracea*, var. *gemmifera*)
- Chinese cabbage (*Brassica pekinensis*).
- Radish (*Raphanus sativus* L.).
- Rocket (*Eruca sativa*)



Cabbage





Kohlrabi





Cauliflower





Broccoli





Broussel sprouts





Chinese cabbage





Radish





Rocket





Chenopodiaceae

- Spinach (*Spinacia oleracea* L.)
- Red beet (*Beta vulgaris* L. var. *conditiva*)
- Swiss chard (*Beta vulgaris* L. var. *sicla*)



Spinach





Red beet





Swiss chard





Apiaceae

- Celery (*Apium graveolens* L.).
- Parsley (*Petroselinum crispum* Mill.).
- Carrot (*Daucus carota* L.).
- Dill (*Anethum graveolens* L. var. *hortorum*).
- Fennel (*Foeniculum vulgare* Mill.).



Celery





Parsley





Carrot





Dill





Fennel





Malvaceae

Okra
(*Abelmoschus esculentus*)





Alliaceae

- Leek (*Allium porrum* L.).
- Onion (*Allium cepa* L.).
- Garlic (*Allium sativum* L.).



Leek





Onion





Garlic





Asparagaceae

- **Asparagus (*Asparagus officinalis* L.).**





Asparagus

